

strata[®]
tiles



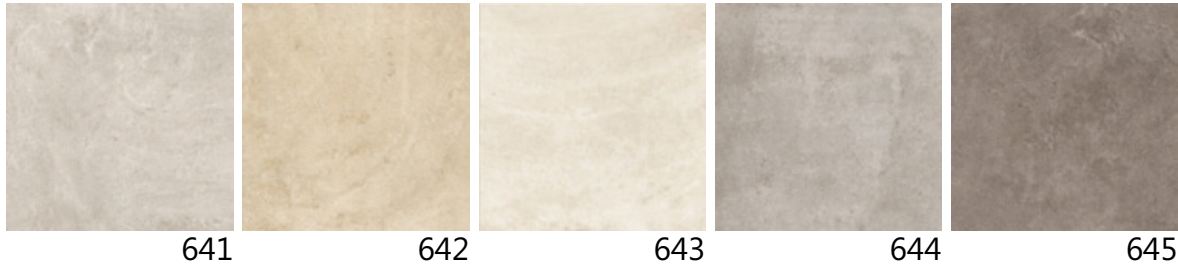
CALCINA

Calcina is a porcelain collection created from the evolution of metropolitan style, generated from the rediscovery of basic materials that make up the urban fabric. The interplay between different surfaces such as cement, metal and ceramic results in something new and wonderful with a natural and contemporary flavour.

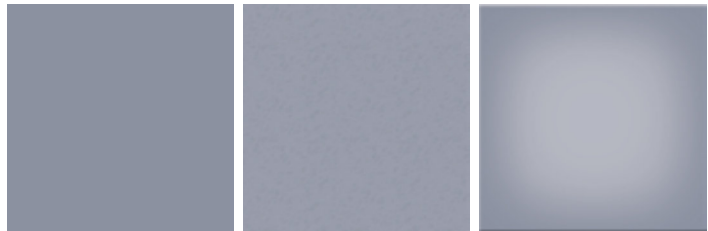
Calcina is available in five material mix colours, that reflect the contemporary spirit of mortar composition and three alternative finishes to enrich and personalise any living space. Classification in accordance with EN 14411 GROUP BIa UGL (ISO 13006).

| | | |
|--------------|---------------|------------|
| 5 Colours | 3 Finishes | 6 Sizes |
|--------------|---------------|------------|

COLOURS



FINISH



| | | |
|-------------------|-----------------------|-------------------|
| Natural (N) R9 | Structured (S) R11 | Polished (P) - |
| Wet 51 / Dry 57 | Wet xx / Dry xx | Wet xx / Dry xx |

SIZES & FORMATS

| | 90x90cm 11mm | 45x90cm 11mm | 45,2x45,2cm 9mm | 60x60cm 10mm | 30x60cm 10mm | 60x60cm 10mm | 15x60cm 0mm | 30x30cm 20mm |
|-----|-----------------|-----------------|--------------------|-----------------|-----------------|-----------------|----------------|-----------------|
| 641 | ✓ | ✓ | ✓ | ✓ | ✓ | ✓ | ✓ | ✓ |
| 642 | ✓ | ✓ | ✓ | ✓ | ✓ | ✓ | ✓ | ✓ |
| 643 | ✓ | ✓ | ✓ | ✓ | ✓ | ✓ | - | - |
| 644 | ✓ | ✓ | ✓ | ✓ | ✓ | ✓ | ✓ | ✓ |
| 645 | ✓ | ✓ | ✓ | ✓ | ✓ | ✓ | - | - |

TECHNICAL DETAILS

Standard

UNI EN ISO 10545-12
UNI EN ISO 10545-13
UNI EN ISO 10545-14

Characteristics

Frost Resistance
Resistance to acids and alkalis
Stain Resistance

Results

Resistance
ULA / UHA
Class 5

SPECIFICATION DETAILS

Framework Supplier: Strata Tiles Limited - 6 Midleton Industrial Est, Guildford, GU2 8XW
Contact Details 0800 012 1454 / info@stratatiles.co.uk

Product Reference: ID33 Calcina
Finish Natural/Structured/Polished
Size 30x60cm/45x45cm/60x60cm/22.5x90cm/45x90cm/90x90cm
Thickness 9mm /10mm/11mm
Slip Potential Slip Resistance Value (SRV) (minimum) /Pendulum Test Value (PTV) (minimum) to BS EN 13036-4, natural wet 51 / dry 57

Accessories:

Grout TBA
Movement Joints TBA
Corduroy Tiles TBA
Skirting Tiles TBA

Calcina

from Strata Tiles

Head Office

Strata Tiles Ltd
Polar House
6 Midleton Industrial Estate
Guildford, Surrey, GU2 8XW

T: 0800 012 1454
E: info@stratatiles.co.uk
W: www.stratatiles.co.uk

Studio

StudioLM
Unit 5, Ground Floor
The Leather Market
Weston Street
Bermondsey, London
SE1 3ER

T: 020 7608 1810

This brochure was composed in April 2016 for Strata Tiles Ltd. All details within are correct at the time of print.

Please note: Product colouration may vary from this brochure to actual samples due to print quality and duplication of images. We strongly advise customers to view actual samples and preferably liaise with a member of a sales team before placing an order.

We are more than happy to discuss any questions with you. Call FREEPHONE on 0800 012 1454



| | | |
|---------------------|----------------------|-------------------|
| 5 Colours | 3 Finishes | 6 Sizes |
|---------------------|----------------------|-------------------|