



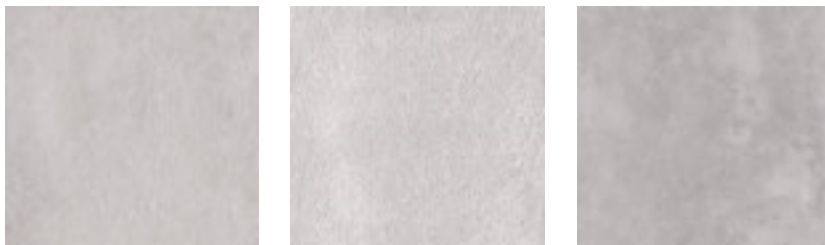
Basement 8

Technical Data Sheet

Colours



Finishes



Natural (N) R10 A Structured (S) R11 A+B Honed (H) R9

Sizes & Formats

	30 x60 cm 10.5mm	60 x60 cm 10.5mm	60 x120 cm 10.5mm	120 x120 cm 10.5mm
PABA-01	N/H/S/R	N/H/S/R	N/H/S/R	N/H
PABA-02	N/H/S/R	N/H/S/R	N/H/S/R	N/H
PABA-03	N/H/S/R	N/H/S/R	N/H/S/R	N/H
PABA-04	N/H/S/R	N/H/S/R	N/H/S/R	N/H
PABA-05	N/H/S/R	N/H/S/R	N/H/S/R	N/H
PABA-06	N/H/S/R	N/H/S/R	N/H/S/R	N/H
PABA-07	N/H/S/R	N/H/S/R	N/H/S/R	N/H
PABA-08	N/H/S/R	N/H/S/R	N/H/S/R	N/H



Basement 8

Technical Data Sheet

Technical Details

Classification in accordance with CEN EN 14411 GRUPPO BIa UGL (ISO 13006)

<u>Features</u>	<u>Standard s</u>	<u>Results</u>
Dimension & surface quality	UNI EN ISO 10545-2	Conforms
Water absorption	UNI EN ISO 10545-3	$\leq 0.05\%$
Flexural strength	UNI EN ISO 10545-4	$>50 \text{ N/mm}^2$
Scratch resistance	UNI EN ISO 10545-6	$< 140 \text{ mm}^3$
Linear thermal expansion	UNI EN ISO 10545-8	$7 \times 10^{-4} \text{ } ^\circ\text{C}^{-1}$
Thermal shock resistance	UNI EN ISO 10545-9	Resistant
Frost resistance	UNI EN ISO 10545-12	Resistant
Resistance to acids & alkalis	UNI EN ISO 10545-13	ULA/UA
Stain resistance	UNI EN ISO 10545-14	Class 5